

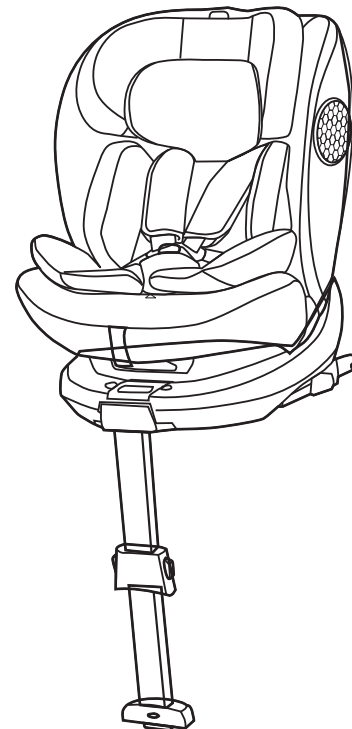
red kite

IMPORTANT READ CAREFULLY
AND KEEP FOR FUTURE REFERENCE

Instruction leaflet

HOOP 360

Car Seat



Manufactured by:
The Red Kite Baby Co Ltd. 35 Lavenham Road,
Beeches Industrial Estate,
Yate, Bristol, BS37 5QX. UK.
Authorized Representative:
Mum n Me. Triq is-Suq, Zejtun, ZTN1420. Malta.



Suitable for



40 - 150 cm

Customer Care: www.redkitebaby.co.uk



As part of our ongoing commitment to quality, we regularly review and update the instruction manuals for our child car seats. If you have any questions regarding the use or installation of the seat while reviewing the manual, please visit the relevant section on our website.

There, you will find the most up-to-date version of the manual.

For further clarification or assistance on this or any other matter, please don't hesitate to contact our customer service team via our website.

FORWARD FACING
INSTALLATION

(ISOFIX +3 – point safety belt).

100/150
cm

FORWARD FACING
INSTALLATION

(3 – point safety belt).

100/150
cm

CLEANING AND MAINTENANCE



IF THE CAR IS EQUIPPED WITH AN ACTIVE PASSENGER FRONT SEAT AIRBAG, THE CHILD MUST NEVER BE PLACED IN A REAR-FACING SEAT IN THE FRONT OF THE CAR.

- Read the entire instruction manual thoroughly before using the child car seat. Improper installation can endanger your child's life.
- Never make alterations or additions to the product.
- Child car seat parts may become hot in direct sunlight. Cover the seat with a sheet to prevent this.
- Most accidents occur during short trips, so always use the seat, even on short journeys.
- Do not use this product second-hand, as you cannot know its history.

WARNINGS

1. Used as i-Size category ECRS: This is an i-Size Enhanced Child Restraint System. It is approved according to UN Regulation No.129, for use in, i-Size compatible vehicle seating positions as indicated by vehicle manufacturers in the vehicle users' manual. If in doubt, consult either the Enhanced Child Restraint System manufacturer or the retailer.

2. Used as i-Size booster seat category ECRS: This is an i-Size booster seat Enhanced Child Restraint System. It is approved according to UN Regulation No. 129, for use primarily in "i-Size seating positions" as indicated by vehicle manufacturers in the vehicle user's manual. If in doubt, consult either the Enhanced Child Restraint System manufacturer or the retailer.

3. IMPORTANT – DO NOT USE FORWARD FACING BEFORE THE CHILD'S AGE EXCEEDS 15 MONTHS (Refer to instructions).

4. Do not use the ECRS in seating positions where there is an active frontal airbag installed.

5. Ensure that the rigid components and plastic parts of the ECRS are positioned and installed in a way that prevents them from becoming trapped by a movable seat or the vehicle door during normal use.

6. Any straps holding the restraint to the vehicle should be tight, any support-leg should be in contact with the vehicle floor, any straps or impact shields restraining the child should be adjusted to the child's body, and straps should not be twisted.

7. Ensuring any lap strap is worn low down is important.

8. Do not continue using the child seat if any parts are damaged or loosened after an accident.

9. It is dangerous to alter or add to the device without the approval of the Type Approval Authority and to not follow closely the installation instructions provided by the child restraint manufacturer.

10. Do not leave children unattended in the car seat.

11. Make sure all other passengers, luggage, and loose objects are properly secured.

12. Store the child car seat in a safe place when not in use, avoiding placing heavy objects on it.

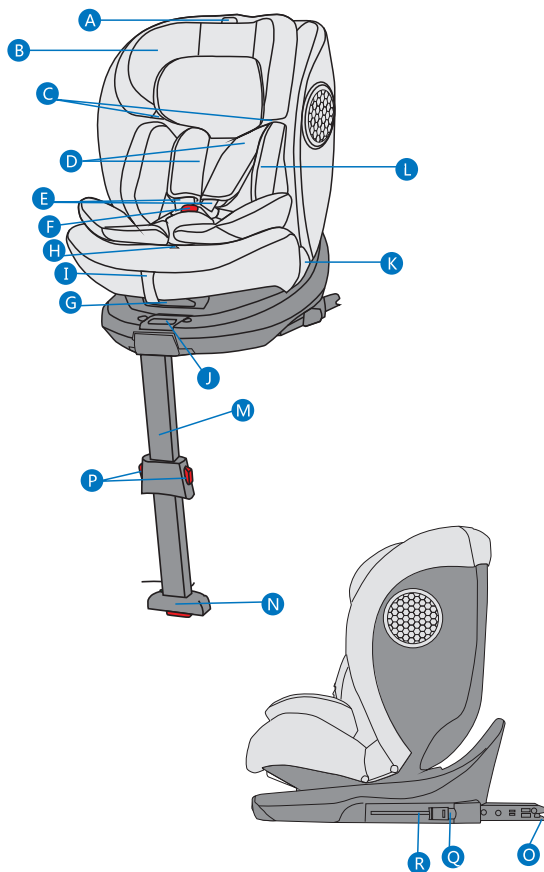
13. Never use the child car seat without the cover. The cover should only be replaced with a cover recommended by the manufacturer, as the cover is an integral part of the restraint's safety performance.

14. Refer to the vehicle manufacturer's handbook for instructions on using an "i-Size ECRS."

15. The child restraint may not be compatible with all approved vehicles when used for children above 135 cm in height.

16. The child restraint may not fit in all approved vehicles when adjusted to certain angles of inclination.

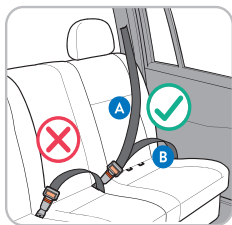
PARTS



PARTS

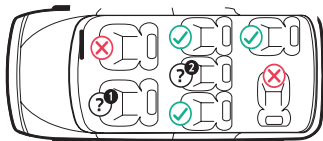
- A. Headrest height adjuster
- B. Headrest
- C. Shoulder belt guide (100-150cm)
- D. Shoulder belt pad
- E. Harness straps
- F. Harness buckle
- G. Recline lever
- H. Harness adjustment button
- I. Harness adjustment strap
- J. Rotation handle
- K. Lap belt guide
- L. Small baby insert cushion
- M. Support leg
- N. Indicator
- O. ISOFIX connector
- P. Support leg release button
- Q. ISOFIX system unlock button 1
- R. ISOFIX system unlock button 2

INSTALLATION POSITIONS INSIDE THE CAR



A Shoulder belt

B Lap belt



?¹ IN SEATS WITH:
ISOFIX anchorages and 3-point safety belt

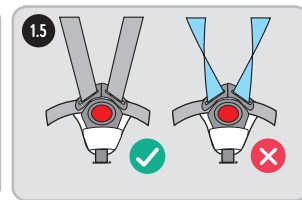
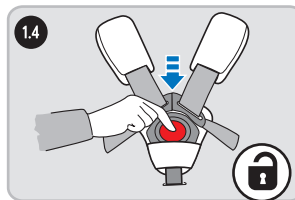
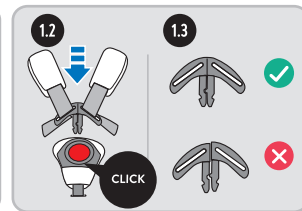
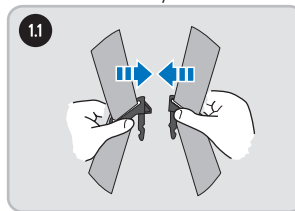
?² WARNING:
Only suitable for seats with a 3 point safety belt.
Shoulder belt (A) and lap belt (B).

ECRS facing	Size range	Installation method	Category
Rearward facing	40-105cm	ISOFIX+support leg +harness system	i-Size
Forward facing	76-105cm	ISOFIX+support leg +harness system	i-Size
Forward facing	100-150cm	Method 1: ISOFIX+3- point safety belt Method 2: 3-point safety belt	i-Size booster seat

GENERAL SEAT USE

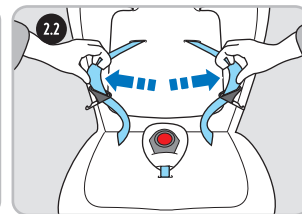
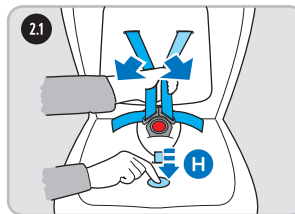
1.

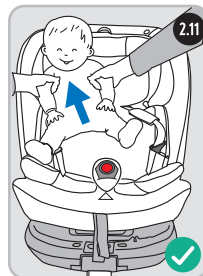
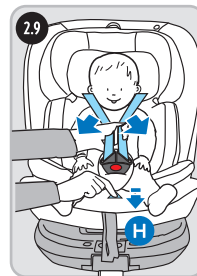
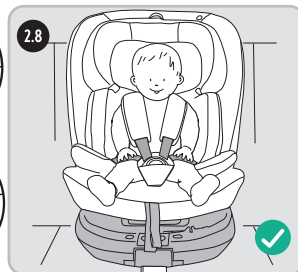
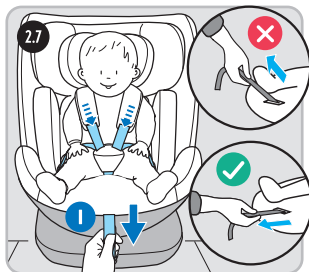
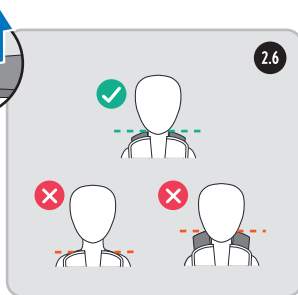
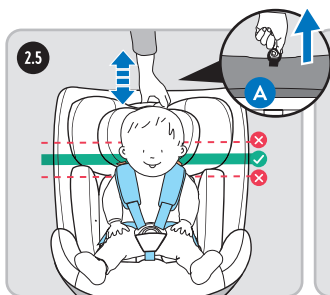
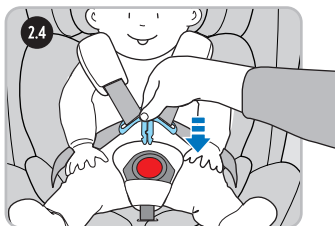
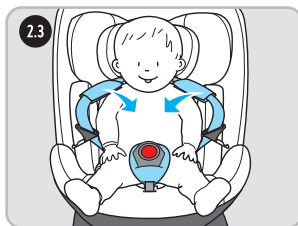
HOW TO USE THE HARNESS BUCKLE. Insert the two clips on the belts into the buckle until you hear a 'click'.



2.

ADJUST THE LENGTH OF THE HARNESS. The straps should be level with the child's shoulders.



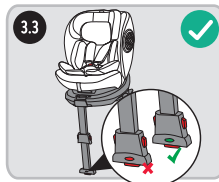
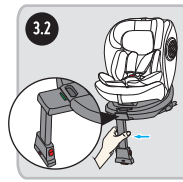
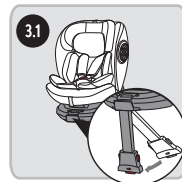


3.

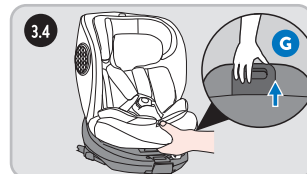
TO ROTATE THE SEAT.

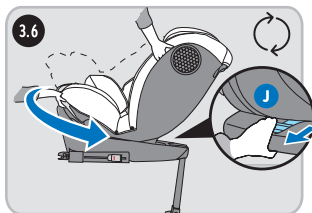
Pull the support leg out completely before rotating the car seat.

Pull the recline lever (G) located at the base of the seat and fully recline the seat (position 1). Pull the rotation handle (J) while turning the seat to face rearward or forward.



Pull out to enable spin function

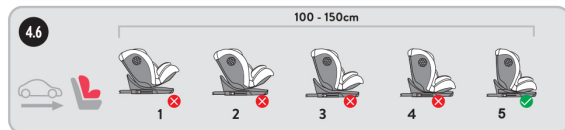
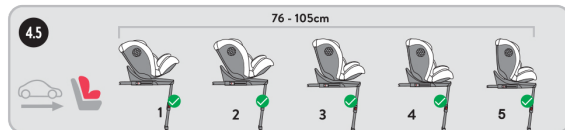
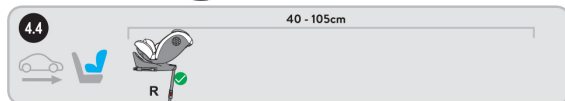
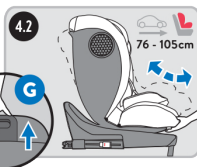
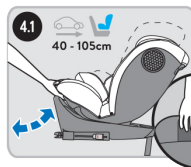




4.

TO ADJUST THE RECLINE POSITIONS.

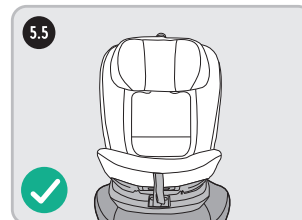
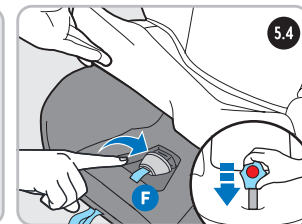
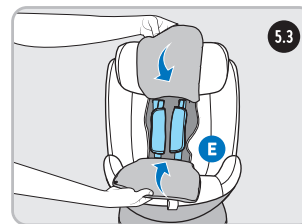
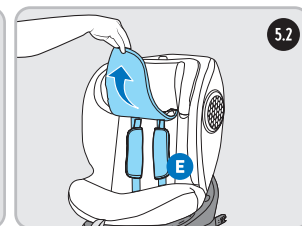
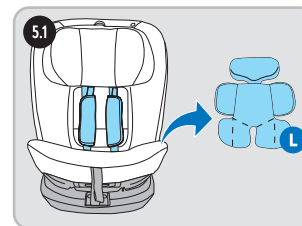
Pull the lever (G) and move the seat to select one of the recline positions available for your child's height.



5.

HIDE THE 5-POINT HARNESS AND BUCKLE.

Remove small baby insert cushion (L). Hide the harness straps (E) in the backrest and the buckle (F) in the base of the seat preparing it for 100-150 cm in height.

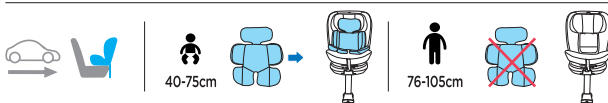


INSTALLATION

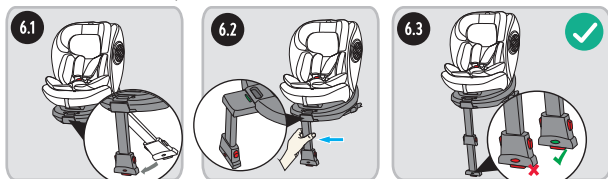
6.

40-105 cm

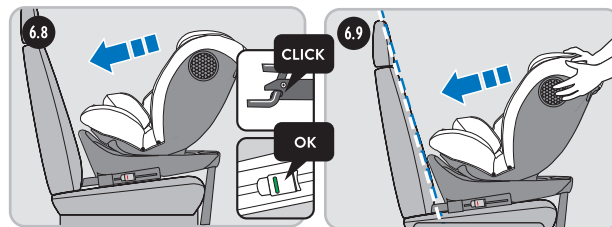
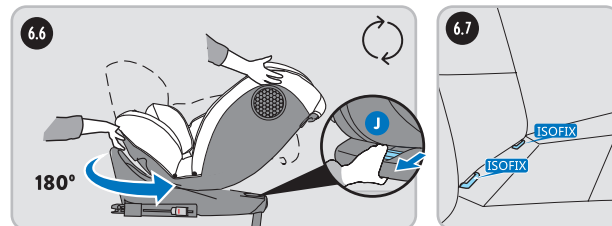
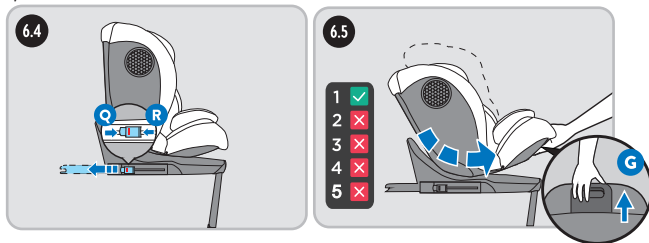
Rearward-facing installation (ISOFIX + Support leg + harness system).



Pull out to enable spin function



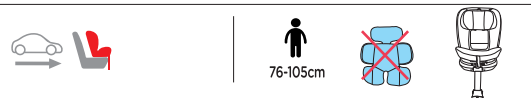
ATTENTION: Pull the support leg out completely before rotating your car seat.



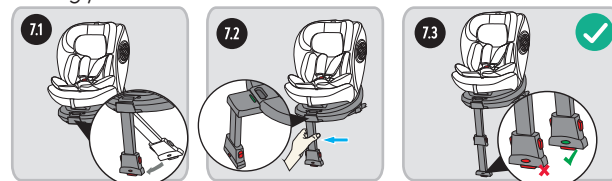
7.

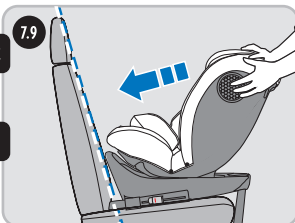
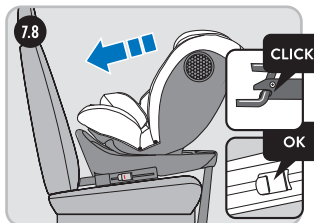
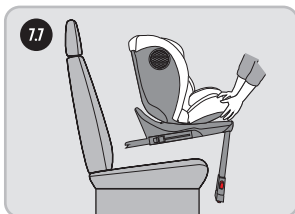
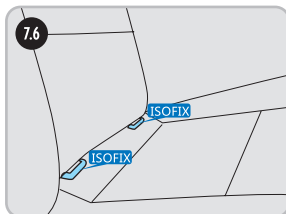
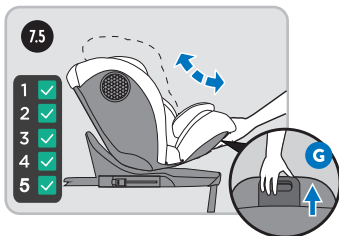
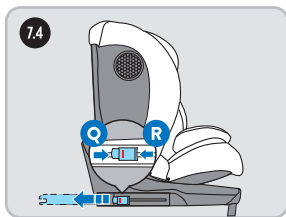
76-105 cm

Forward facing installation (ISOFIX + Support leg + harness system).



ATTENTION: Pull the support leg out completely before rotating your car seat.

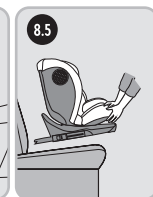
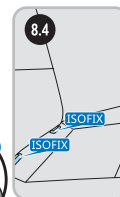
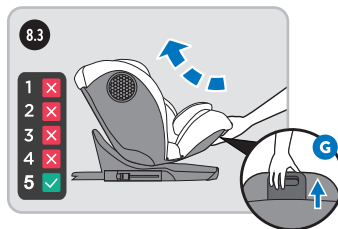
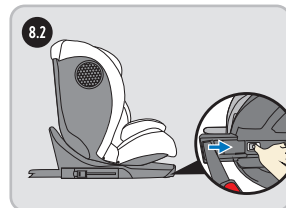
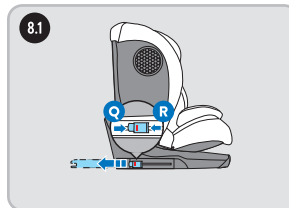


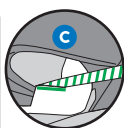
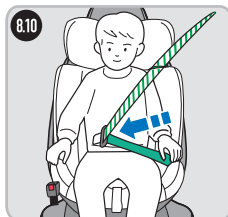
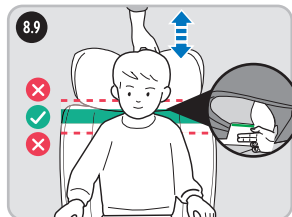
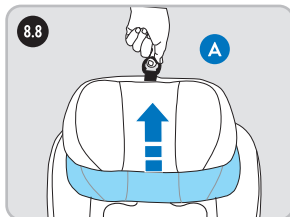
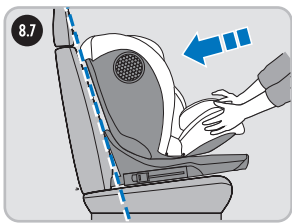
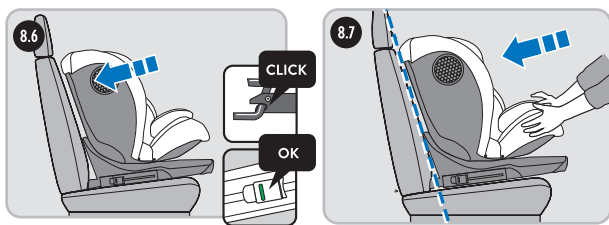


8.

100-150 cm

Forward facing installation (ISOFIX+3-point safety belt).





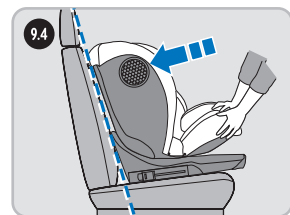
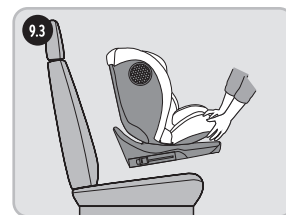
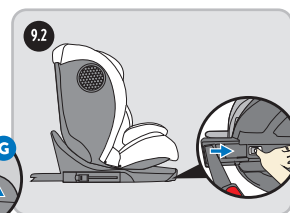
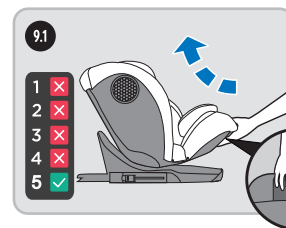
9.

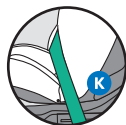
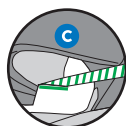
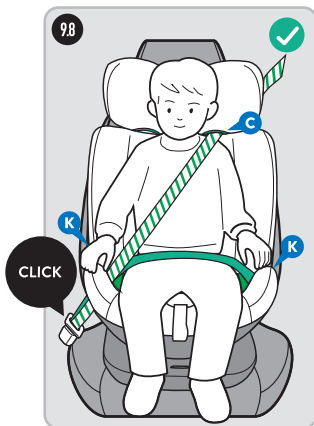
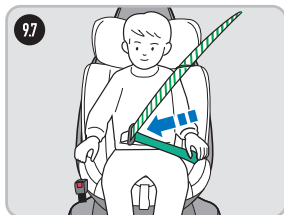
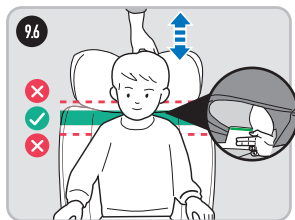
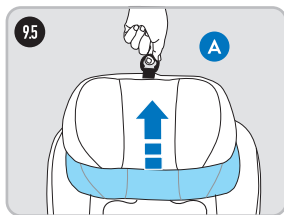
100-150 cm

Forward facing installation (3-point safety belt).



100-150cm





CLEANING AND MAINTENANCE



- **FABRIC COVER CARE:**
- The fabric cover can be machine washed on a 30°C cycle.
- The small baby insert cushion (L.) can be machine washed on a 30°C cycle.
- Do not bleach, tumble dry, iron, or dry clean the fabric.
- Excessive rubbing may damage the surface and sponge layer.
-
- **PLASTIC BODY CARE:**
- Clean straps and plastic parts with a neutral detergent and warm water.
- Make sure soap does not enter the buckle or other metal parts.
- Do not use chemical products or bleach on any part of the seat.