

# red kite

## IMPORTANT!

## KEEP FOR FUTURE REFERENCE.

Read the instructions carefully before use and keep them for future reference.

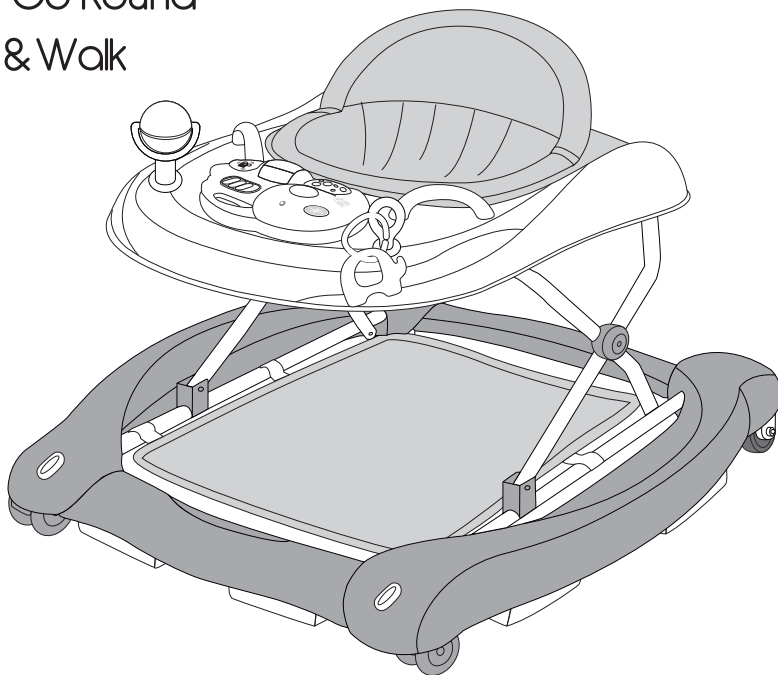
The child may be hurt if you do not follow the instructions.

Adult assembly required.

### Instruction Leaflet

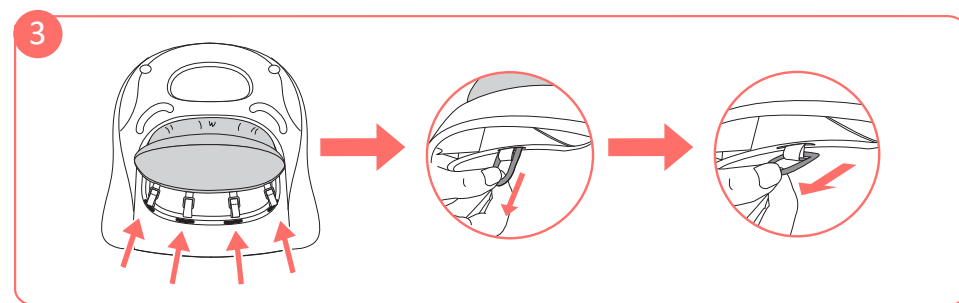
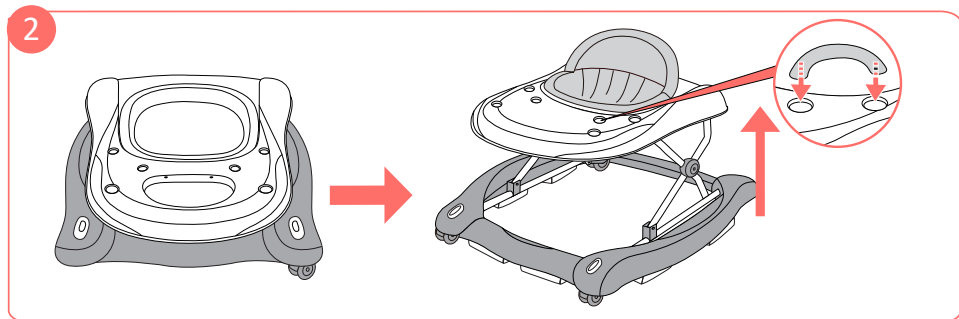
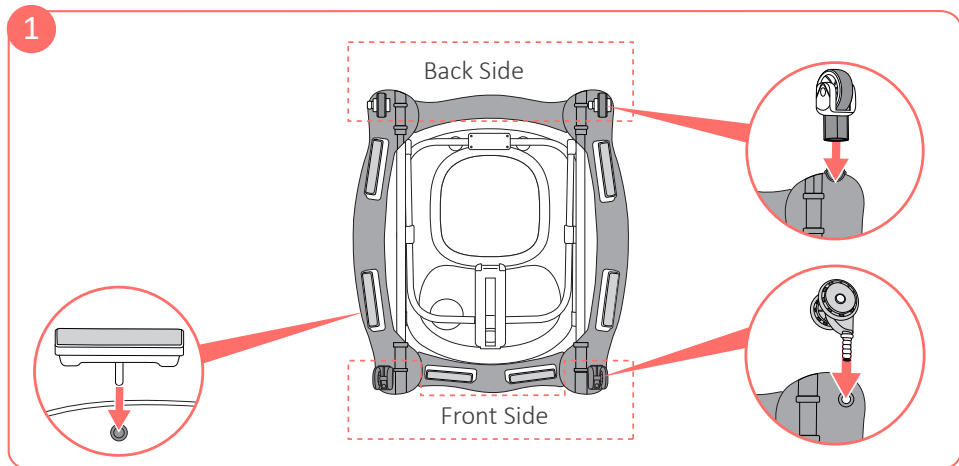
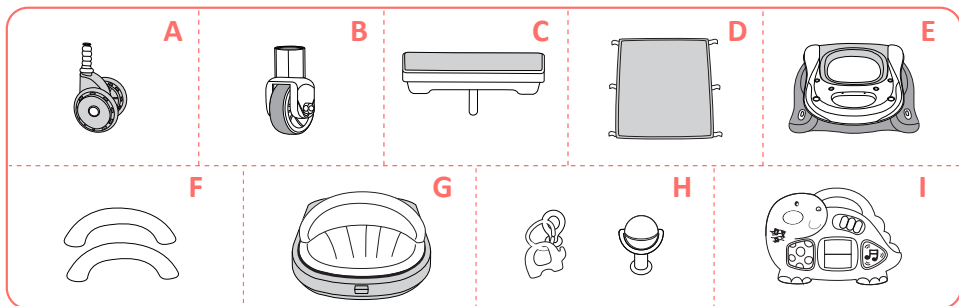
### Baby Go Round

### Twist & Walk

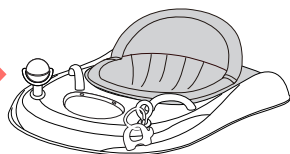
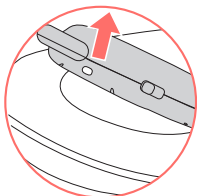
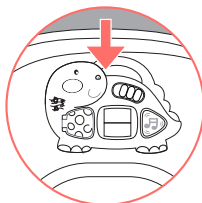
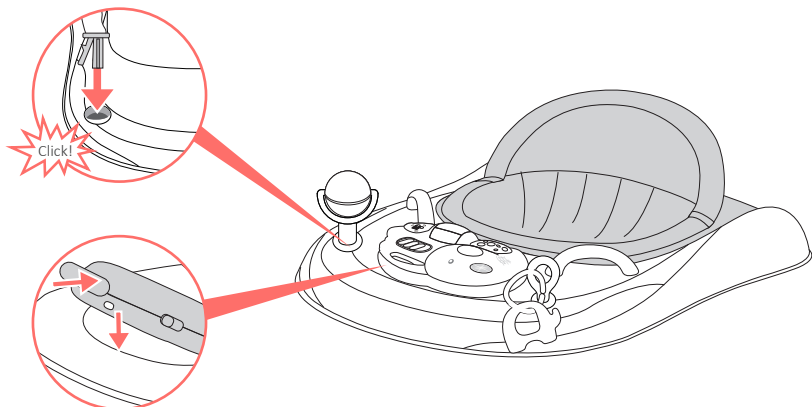


Walker Mode: This product is intended only for a child who can sit up by itself and until it is able to walk by itself or weighs more than 12 kg.

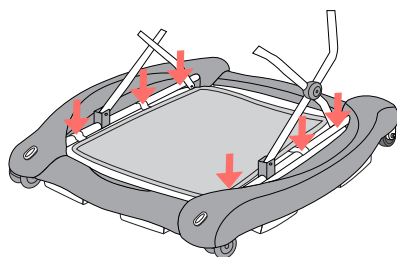
Tested to: BS EN 1273:2020+A1:2023 Customer Care: [www.redkitebaby.com](http://www.redkitebaby.com)



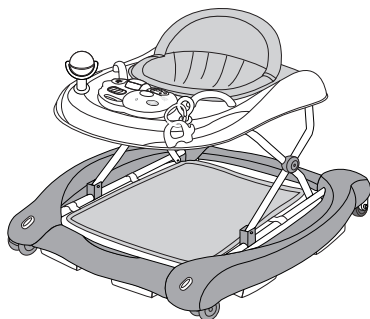
4



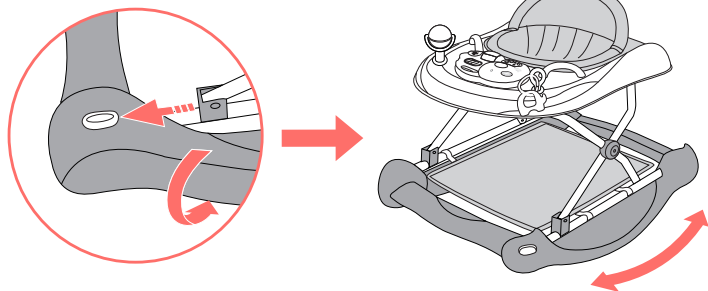
5



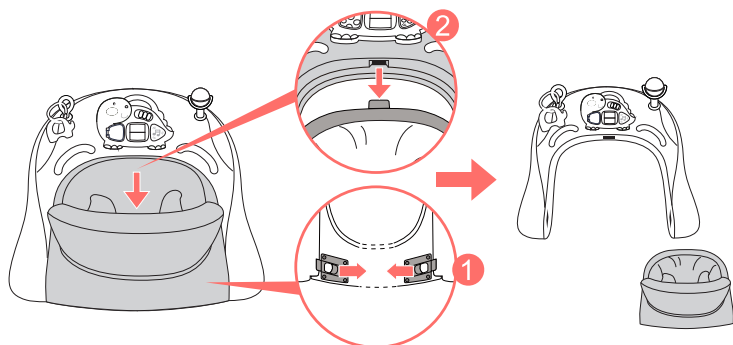
6



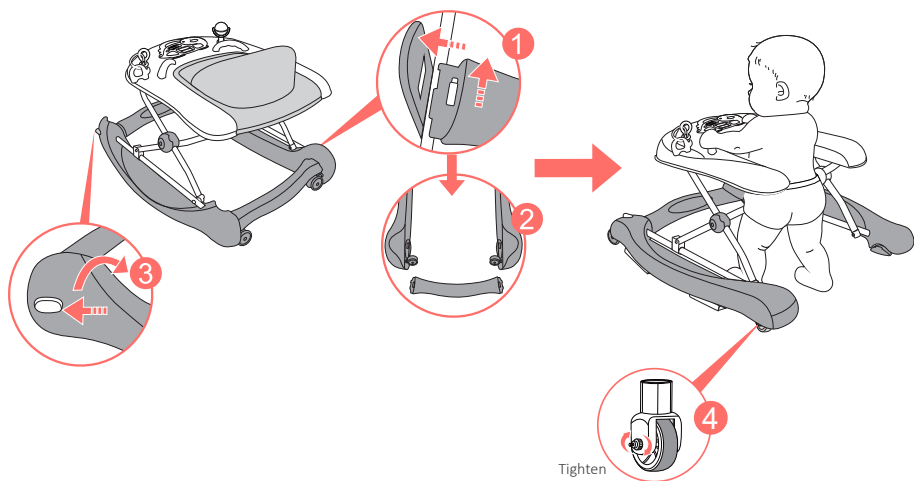
7



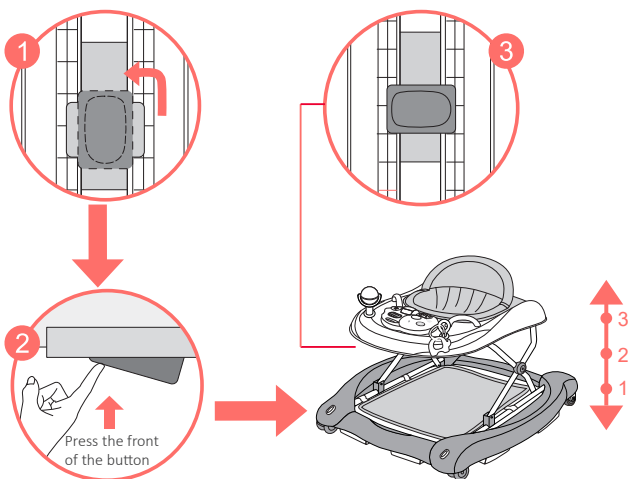
8



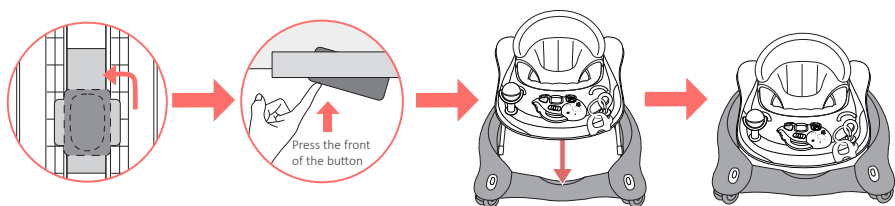
9



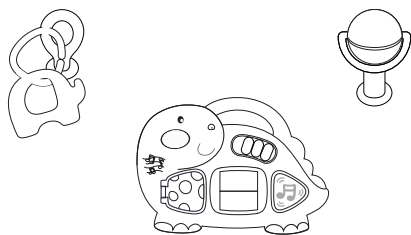
10



11



12



## Parts List

Check that you have all the parts for this model BEFORE assembling your product.  
No tools required.

- |                        |                      |
|------------------------|----------------------|
| A. Front wheels x 2    | F. Handles x 2       |
| B. Rear wheels x 2     | G. Seat unit         |
| C. Friction blocks x 6 | H. Toys              |
| D. Padded mat          | I. Musical play tray |
| E. Main walker frame   |                      |

## Assembly Instructions

### To install the wheels and friction blocks

Push the wheels and friction blocks firmly into the spaces shown on the frame. Fig 1.

### To open the walker and install the handles

Lift the top half of the walker upwards until it locks in place and insert the handles into the corresponding holes until they lock in place. Fig 2.

### To assemble the seat unit

Thread the fabric loops through the corresponding slots running around the recess on the top of the baby walker frame. Pull the buckle all way through the slot and turn it 90 degrees so it lies flat. Fig 3.

### To attach the toys and musical tray

Push the toys and musical tray into the corresponding holes shown until they lock in place. To remove the musical tray, hold the back of it and pull it forwards. Fig 4.

### To attach the padded foot mat

Attach the 6 clips on the mat to the horizontal metal frame bar. It is recommended that the padded foot mat is used only in rocker mode. Fig 5.

The assembled walker should now look like Fig 6.

### To convert to rocker mode

Slide the buttons on the front of the base forward and rotate the curved sides 90 degrees until they lock in place. Figs 7.

### To convert to push along mode

Remove the padded foot mat. Locate the seat locks under the seat section, slide them inwards and lift the complete seat upwards and away from the walker. Fig 8.

Rotate the curved sides to the rocking mode to expose the rear frame locking tabs. Push the tabs sideways and lift the rear frame up and away from the base. Return the curved sides so the wheels are on the ground. The rear wheels have a nut that can be tightened to add friction to the wheels so it doesn't move too quickly. Fig 9.

### Height selection

Turn the red folding button located under the top frame 90 degrees and then push the front of the button upwards. Whilst keeping the button pressed in, you can raise or lower the walker to a different height. There are three available to choose from. Release the red button and ensure it turns back to the locked position. Fig 10.

### Folding the walker

To fold the walker, following the process for height adjustment until it's fully folded. Fig 11.

### General Care:

The correct use and maintenance of this walker is essential.

Ensure that both of the child's feet reach the floor.

Do not use excessive force when adjusting the walker.

Always store the walker in a dry place.

Individual toys on the toy tray are not replaceable.

Do not alter the toy tray by adding toys or cutting existing ones away, this could be dangerous.

### Cleaning:

The seat unit may be spot cleaned by using a sponge with a mild soap and warm water solution. Leave to dry in a ventilated area away from direct sunlight. Do not dry clean, machine wash, bleach or tumble dry.

Metal parts may be cleaned with a damp cloth. Always wipe dry.

Clean plastic parts with a mild soap and warm water solution.

Avoid leaving the walker in direct sunlight for prolonged periods of time as this may cause fabrics to fade.

### Maintenance:

Check that nothing is loose or broken and that no sharp edges have been exposed.

Replace any damaged parts immediately.

Routinely inspect all studs, nuts and screws for tightness. Check the seat attachment points, ensure they are secured.

Never use this product without the friction blocks.

Do not use accessories or replacement parts other than those approved by the manufacturer. Failure to do this may invalidate your warranty.

### Safety Warnings:

WARNING – Never leave the child unattended.

WARNING – The child will be able to reach further and move rapidly when in the baby walking frame.

WARNING – Your child's safety is your responsibility.

Prevent access to stairs, steps and uneven surfaces.

Guard all fires, heating and cooking appliances.

Remove hot liquids, electrical cables and other potential hazards from reach.

Prevent collisions with glass in doors, windows and furniture.

Do not use the baby walking frame if any components are broken or missing.

This baby walking frame should be used only for short periods of time (e.g. 20 min).

Never lift the walker with the child inside.





## IMPORTANT! KEEP FOR FUTURE REFERENCE.

Read these instructions carefully before use. Your child may be hurt if you do not follow the instructions. Adult assembly required.

Instruction Leaflet

### Baby Go Round Twist & Walk Activity Tray

This product requires 2 x 1.5v "AA" batteries. (Not supplied).

To insert /replace the batteries

Undo the screw on the battery compartment cover and open the compartment. Fit the batteries into the space provided and ensure they observe the correct polarity as shown on the product. Close the compartment, replace the screw and tighten. Secure the toy tray into the walker.

#### CAUTION Battery Safety

Always keep batteries and tools out of reach of babies and children.

Exhausted batteries are to be removed from the toy.

Remove the batteries if the toy will not be used for a long period of time.

Only use alkaline batteries of the same type or equivalent to the type recommended for the correct function of this product.

Never mix new and old or different types of batteries.

When fitting new batteries, always ensure that they have been fitted in the correct polarity (as shown on the product).

Do not burn or dispose of spent batteries into the environment. Dispose of them at an appropriate differentiated collection point.

Do not short circuit the battery terminals.

Never attempt to recharge non-rechargeable batteries, they might explode.

Rechargeable batteries are only to be charged under adult supervision.

**WARNING** This product is designed solely for use in conjunction with the Baby Go Round Twist & Walk.

Suitable for babies from 6 months.

**WARNING:** This toy produces flashes that may trigger epilepsy in sensitised individuals.

Manufactured By: The Red Kite Baby Co Ltd. 35 Lavenham Road, Beeches Industrial Estate, Yate, Bristol, BS37 5QX. UK. Customer Care Line: 01454 326 568

Authorised Representative: Mum n Me. Triq is-Suq, Zejtun, ZTN1420. Malta.