

21CM

14.3CM

General care:

- Suitable for children from approx 18 months up to a maximum weight of 22kg.
- Never leave the child unattended. Adult supervision is required.
- Inspect seat before each use. Ensure all screws are tightened.
- Choking hazard – Keep small parts away from children.
- Do not allow the child to use the product until it has been fully assembled by an adult.
- Keep fingers away from hinges when folding and unfolding.
- This product is not a toy.
- Maximum weight: 22kg.
- Please retain this pack for future reference.
- Colours and designs may vary.

Cleaning:

- Clean plastic parts with a mild soap and water solution, wipe dry.
- Do not use Bleach.

Maintenance:

- Check that nothing is loose or broken and that no sharp edges have been exposed. Inspect all joints and replace any damaged parts immediately.
- Inspect screws and fastenings regularly to ensure none have worked loose. Tighten as necessary.
- Only use replacement parts and accessories that have been approved by the manufacturer. Failure to do this may invalidate your warranty.

Manufactured By: The Red Kite Baby Co Ltd. 35 Lovenham Road, Beeches Industrial Estate, Yate, Bristol, BS37 5QX, UK.

Authorised Representative: Mum n Me. Triq is-Suq, Zejtun, ZTN1420, Malta.

red kite

red kite

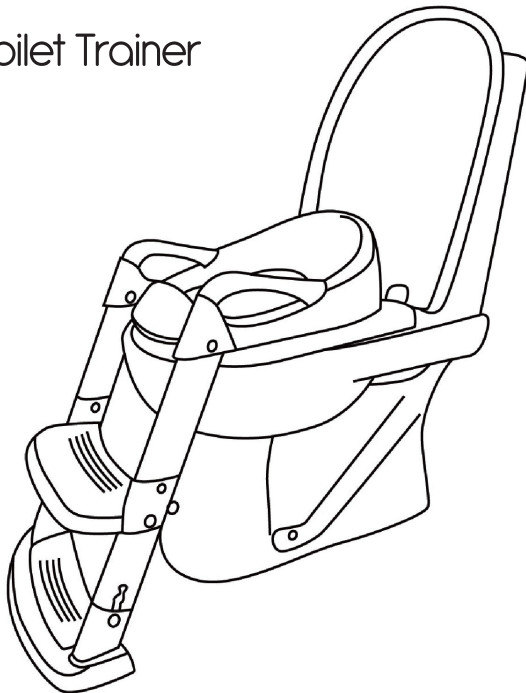
IMPORTANT

Read the instructions carefully before use and keep them for future reference.

The child may be hurt if you do not follow the instructions. Adult assembly required.

Instruction Leaflet

Step & Sit Toilet Trainer



*Product detail may vary slightly from images shown

Suitable for children from approx 18 months up to a maximum weight of 22kg
Customer Care: www.redkitebaby.com

反面

14.3CM



Assembly Instructions

Parts List



1 x Seat



2 x Top ladder legs



2 x Middle ladder legs



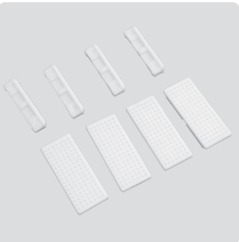
2 x Bottom ladder legs



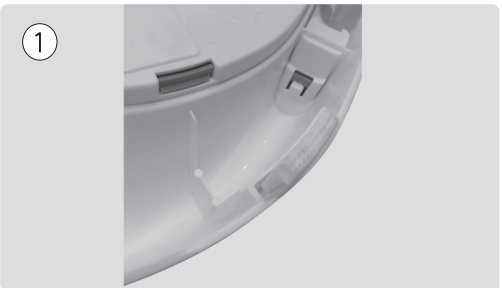
Foot plates



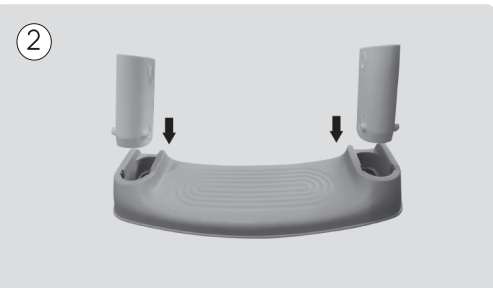
1 x Fitting kit



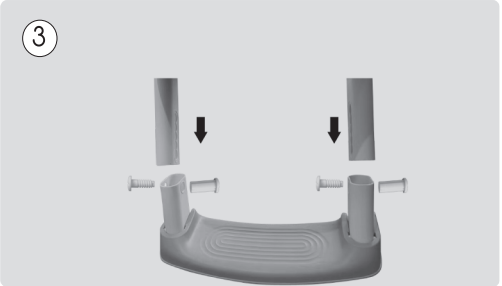
1 x Friction strips kit



Insert the small anti slip friction strips into the bottom of the seat and the larger friction strips on to the bottom of the lower foot plate.



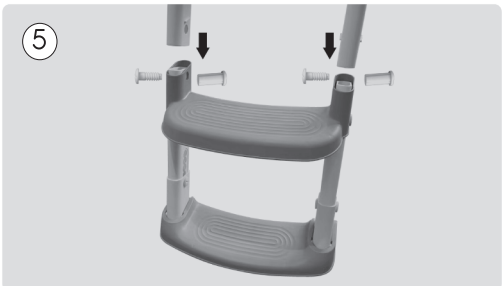
Insert bottom ladder legs into the grey foot plate until they click in place.



Insert middle ladder legs and secure with fixing screws.



Insert upper foot plate and secure with fixing screws.



Insert top ladder legs and secure with fixing screws.



Attach the seat to the tops of the top ladder legs and secure with fixing screw.



Adjust step 5 to adjust to the correct height.

Safety Advice

Ensure that all friction strips are securely in contact with the toilet seat and lie flat on the floor to prevent slipping or movement during use.